


**Hazy Mary**
**Sample 488-112723-136**

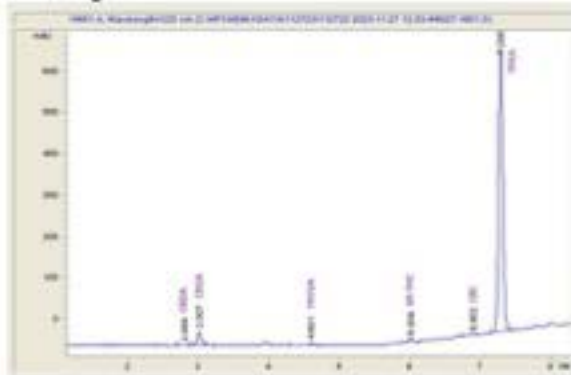
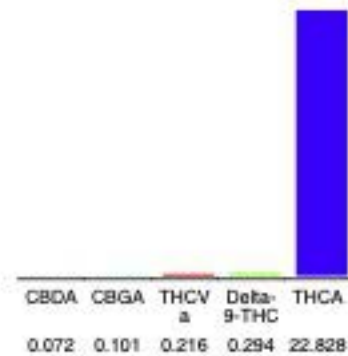
THCA Flower - Gush Mintz

Batch/Lot # HM-012

Sample Submitted: 11-27-2023; Report Date: 12-01-2023

**THCA Flower - Gush Mintz**
**Batch/Lot # HM-012**

Plant Material: Hemp Flower

**Chromatogram**

**Cannabinoid Profile**

**Cannabinoid Profile by HPLC**
**0.29%**

Delta-9-THC

**0.00%**

CBD

**23.51%**

Total Cannabinoids

Cannabinoid	% wt	mg/g
CBDA	0.072	0.72
CBGA	0.101	1.01
THCVa	0.216	2.16
Delta-9-THC	0.294	2.94
THCA	22.83	228.28
<b>Total Cannabinoids</b>	<b>23.51</b>	<b>235.1</b>
<b>Calculated Total THC</b>	<b>20.31</b>	<b>203.14</b>
<b>Calculated CBD Yield</b>	<b>0.06</b>	<b>0.63</b>

Calculated Total THC = Delta-9-THC + 0.877 \* THCA

Calculated Maximum CBD Yield = CBD + 0.877 \* CBDA

**Marin Analytics, LLC**

 250 Bel Marin Keys Blvd, Suite D4  
 Novato, CA 94949

833-321-TEST / info@marinanalytics.com


**Mike Clemmons**  
 Lab Manager